

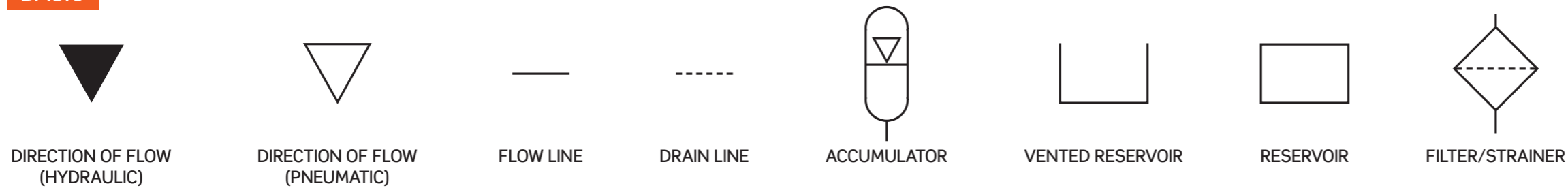
# Schematic Symbols

## Hydraulic and Pneumatic

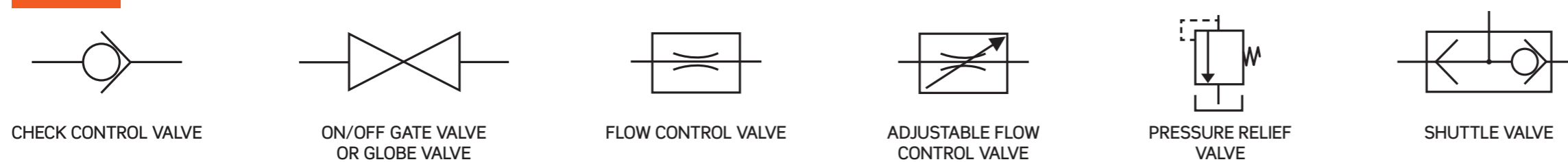


**LJ CREATE™**  
Learning for life

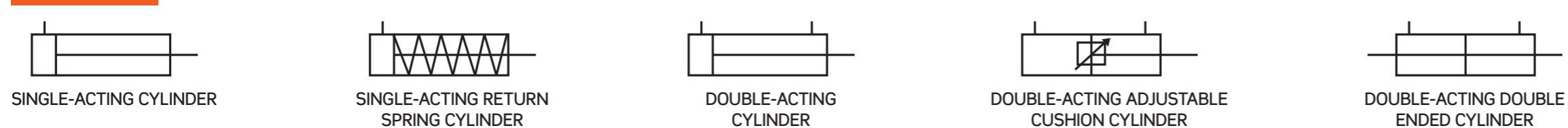
### BASIC



### VALVES



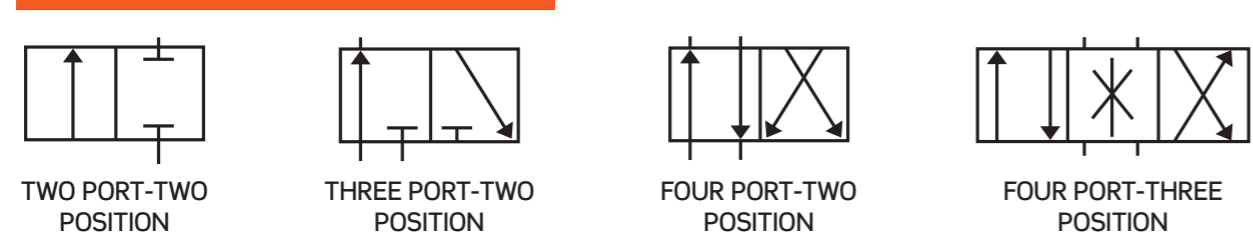
### CYLINDERS



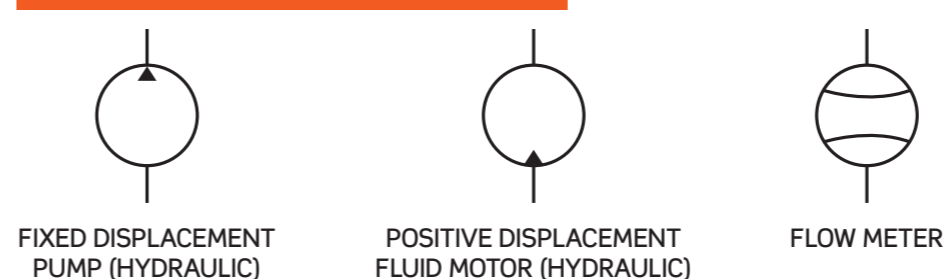
### CONTROLS



### DIRECTIONAL CONTROL VALVES



### PUMPS/MOTORS/INSTRUMENTS



### SCHEMATIC SYMBOLS

Hydraulic/Pneumatic schematic diagrams are composed of symbols that indicate the types of components the circuit contains and how they are interconnected.

Familiarise yourself with these symbols before you begin to use them.