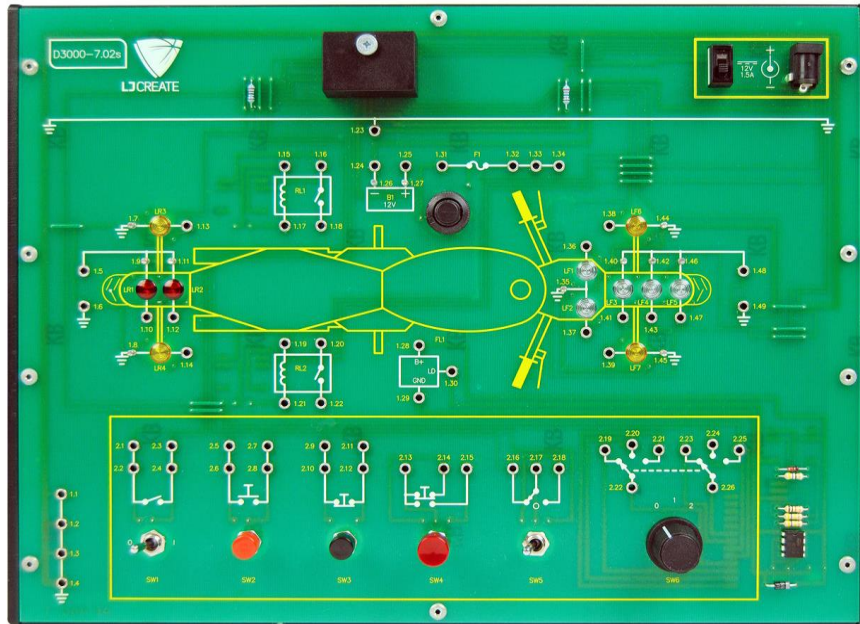


Product Information Sheet

Motorcycle Lighting Circuits Board



This hands-on learning resource allows students to build a variety of motorcycle lighting circuits using a range of on-board components. Students are set tasks that encourage them to explore motorcycle lighting circuits practically to help develop their understanding of the associated electrical components, circuits and systems. The resource is also focused on the development of diagnostic and fault-finding skills using real test equipment.

This resource is supplied with a curriculum manual CD containing practical tasks and activities.

The trainer can also be used in conjunction with our optional cloud-based software, which offers online practical electronics tasks as well as interactive theory presentations, investigations, and assessments, which link directly to the practical activities carried out using this resource.

Practical Topics Covered Include:

- Using a multimeter
- Introduction to fault finding
- Brake (stop) lamps
- Dip/main (lo/hi) beam lamps
- Direction indicator (turn signal) lamps
- Side lamps (park and tail) lamps
- Introduction to headlamp circuits
- Relay circuits
- Relay-controlled headlamp circuits

Typical Activities Include:

- Use a digital multimeter to measure DC voltage and resistance continuity
- Use a multimeter to investigate an instrument lighting-circuit fault

- Investigate a brake (stop) lamp circuit using a multimeter
- Troubleshoot a faulty brake (stop) lamp circuit with a multimeter
- Construct a dip/main (lo/hi) beam circuit.
- Troubleshoot a faulty dip/main (lo/hi) beam circuit using a multimeter
- Investigate how a flasher unit works.
- Build a direction indicator (turn signal) circuit.
- Troubleshoot a faulty direction indicator (turn signal) circuit
- Add direction indicator (turn signal) repeaters on instrument panel
- Troubleshoot a faulty side (park and tail) light circuit
- Construct a relay-operated headlamp circuit
- Build a complete motorcycle front-lighting system

The circuit board provides the following features:

- On-board mimic of a motorcycle, with access to the following circuit components:
 - 12V battery
 - Fuse (resettable)
 - Two relays
 - Flasher unit
 - Six different types of switches
 - Headlamp circuit with dip/main (lo/hi) beams
 - Park and tail (side) lamps
 - Brake (stop) lamp
 - Direction indicator (turn signal) lamps
 - Instrument panel repeater lamps

Product Information Sheet (Continued)

Motorcycle Lighting Circuits Board



Items Included:

- Trainer
- Trainer Storage Case
- Curriculum manual CD

Other Items Required:

- 707-01 Autotronics Accessory Pack

General Information:

Trainer dimensions: 290 x 210 x 50 mm (W, D, H)

Packed Volume: Approx 0.007 m³

Packed Weight: Approx 1.2 kg

Order Code: 702-01

P8476-A

For more information visit www.ljcreate.com