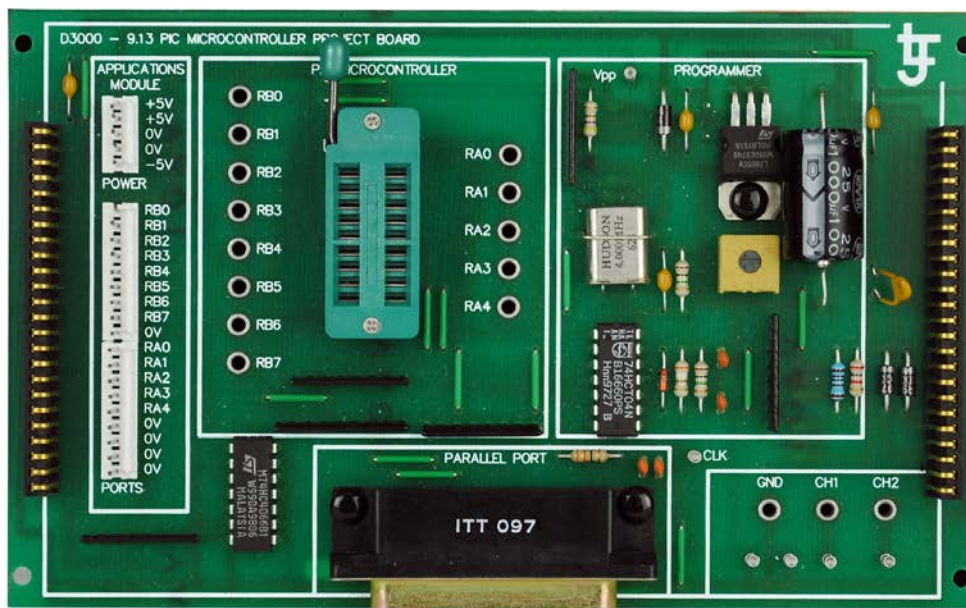


# Product Information Sheet

## PIC Microcontroller



This electronics study card is designed to connect to the 409-01 Experiment Platform or to the 300-01/300-02 Advanced Electronics Experiment Platforms\* as part of a modular electronics programme.

PIC Microcontrollers are a great application for teaching a variety of electronic aspects. This practical resource provides an engaging introduction to control using microcontrollers.

The learner will investigate programming of input and output devices through a series of practical investigations. This resource is ideal for use within an intermediate electronics program.

The board can be also be used in conjunction with our optional cloud-based software, which offers online practical electronics tasks as well as interactive theory presentations, investigations, and assessments, which link directly to the practical activities carried out using this resource.

\* **Note:** to connect to 300-01, 300-02, D3000 EXP or D3000 VIP2 you will also need a 409-02 Experiment Card Motherboard.

### Practical Tasks Include the Following:

- Introduction to PICs and PICBasic
- Basic PICShell and Running a PIC Program
- Introduction to Programming
- Ports and Input/Output
- Loops and Sequences
- Arithmetic & Logic Operations and Delays
- Introduction to Interrupts

### Items Included:

- Circuit Card
- Storage Case
- Manuals in PDF Format on CDROM
- PC Connection Lead
- USB Adaptor

### Other Items Required:

- Windows PC
  - 490-01 Experiment Platform
- or*
- Windows PC
  - 300-02 Advanced Electronics Experiment Platform
  - 409-02 Experiment Card Motherboard

### General Information:

Dimensions: 50 x 238 x 175 mm (W, H, D)  
Shipping Volume: Approx 0.002 m<sup>3</sup>  
Shipping Weight: Approx 0.35 kg

**Order Code: 429-13**

P8556-A

For more information visit [www.ljcreate.com](http://www.ljcreate.com)