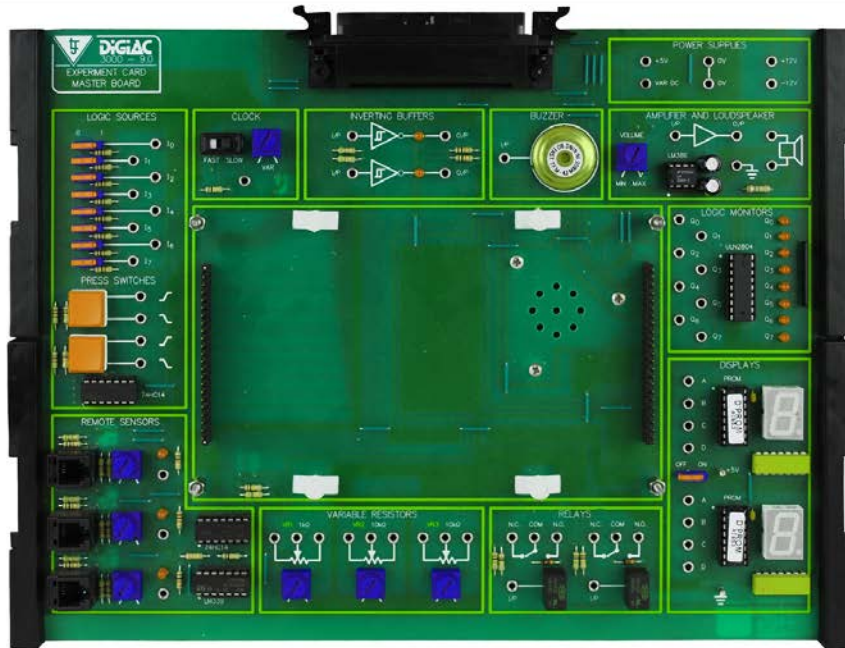


Product Information Sheet

Experiment Card Motherboard



The intermediate electronics range provides a practical resource that introduces students to core electronics and electronic systems through a wide range of practical activities.

The Experiment Card Motherboard together with either a 300-01 or a 300-02 experiment platforms provides the base console for an intermediate electronics workstation. The unit allows the range of experiment cards to be connected for the practical study of electronics.

These boards can also be used in conjunction with our optional cloud-based software, which offers online practical electronics tasks as well as interactive theory presentations, investigations, and assessments, which link directly to the practical activities carried out using this resource.

The Motherboard includes input, process, and output devices required for the various circuit investigations.

Faults can also be inserted into the experiment cards via the Motherboard, enabling students to investigate electronic faultfinding techniques.

On-Board Electronic Devices Include the Following:

- Experiment Card Mounting Area
- Eight Logic Sources
- Two De-bounced Press Switches
- Slow and Fast Range Clock
- Two Inverting Buffers
- Buzzer
- Amplifier and Loudspeaker
- Eight Logic Monitors
- Two Seven Segment Displays
- Two Relays
- Three Variable Resistors
- +5V, -12V, +12V Power Supplies
- Switched Faults
- Three Remote Sensor Inputs

Items Included:

- Experiment Card Motherboard
- Storage Case

Other Items Required:

- 300-01 Advanced Electronics Experiment Platform
- Or
- 300-02 Advanced Electronics Experiment Platform with Virtual Instrumentation
- And
- Experiment Cards From Intermediate Electronics Range
- Some tasks will require Function Generator and Dual Trace Oscilloscope

General Information:

Dimensions: 81 x 323 x 256 mm (W, H, D)
Shipping Volume: Approx 0.008 m³
Shipping Weight: Approx 2 kg

Order Code: 409-02

P8699-A

For more information visit www.ljcreate.com