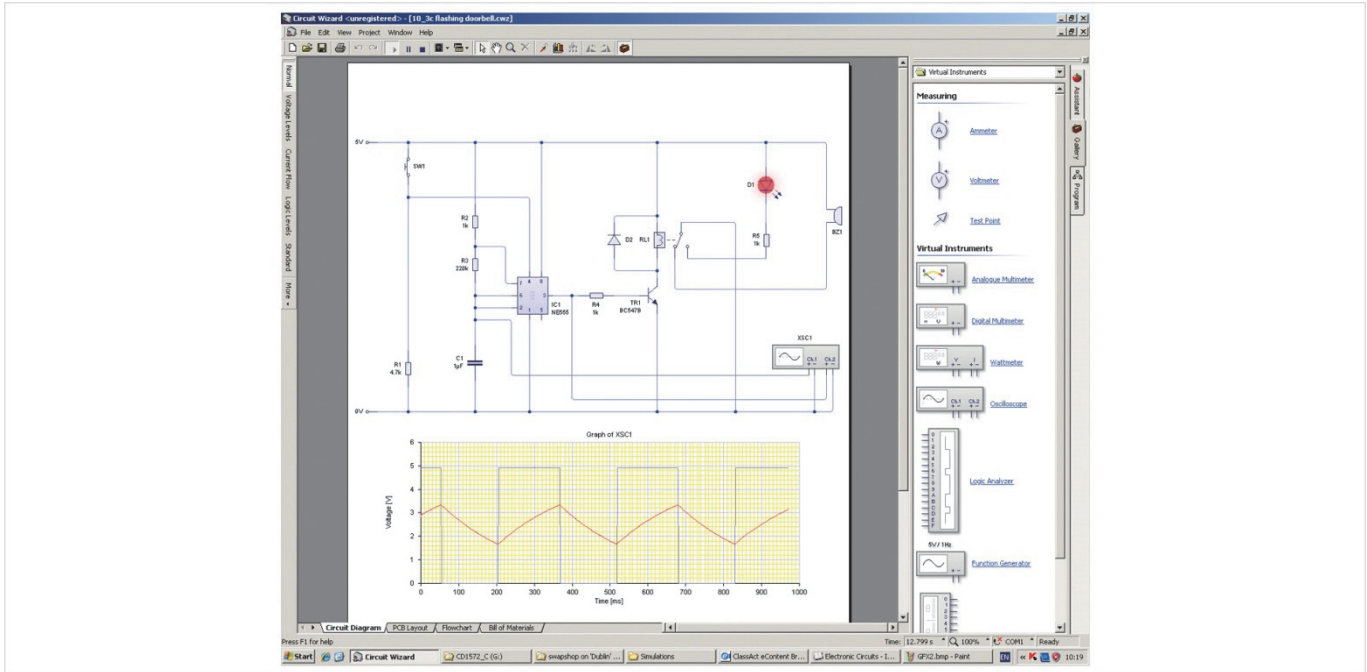


Product Information Sheet

Electronic Circuits Design and Simulation Software (Additional 5 User License)



Our STEM learning packages have been designed to provide practical real world problem solving tasks and activities within the classroom or lab environment. These activities will provide an engaging approach that helps instructors show contextualized linkages between Science, Technology, Engineering, and Mathematics.

Students will have access to hands on learning opportunities within our optional cloud-based curriculum software package. This easy to use software also contains theory presentations, virtual investigations, and support materials to underpin the practical tasks.

The Electronic Circuits Design and Simulation Software offers learners the opportunity to create and test circuits on-screen, before building real circuits or generating PCB projects using the incorporated utilities. This resource supplies an additional five user licenses for the software. (See required items)

Simulation Software Features Include:

- Circuit diagram design
- Component library (1500 models)
- GENIE microcontrollers
- ANSI and DIN symbols
- Schematic capture
- 7 Virtual instruments and Virtual test probes
- Automatic wiring
- Nets and virtual connections
- On-screen animation
- True analogue/digital interactive simulation
- Simulation of component destruction
- Component fault simulation
- Customizable component library
- Interactive component and pin hints

PCB Design Software Features Include:

- PCB layout design
- Component library (1500 models)
- GENIE microcontrollers
- Off-board components
- Interactive PCB layout simulation
- Breadboard simulation and On-screen animation
- 4 Virtual instruments and Virtual test probes
- Automatic PCB routing (1 / 2 of layers)
- Routing of flying wire links
- Interactive PCB routing
- Bill of Materials reporting
- Simulation of component destruction
- Component fault simulation
- Customizable component library
- Create your own subsystem blocks
- Interactive component and pin hints
- Design quality checking
- DXF export
- NC-Drill export (Excellon format)
- Gerber export (274-D / 274-X format)

Items Included:

- Additional 5 User License

Other Items Required:

- LJ Create Engineering or Technology Content
- Computer
- 450-04 for initial 5 user licenses.

General Information:

Packed Volume: Approx. 0.0008 m³
Packed Weight: Approx. 0.3 kg

Order Code: 450-05

P8782-B

For more information visit www.ljcreate.com