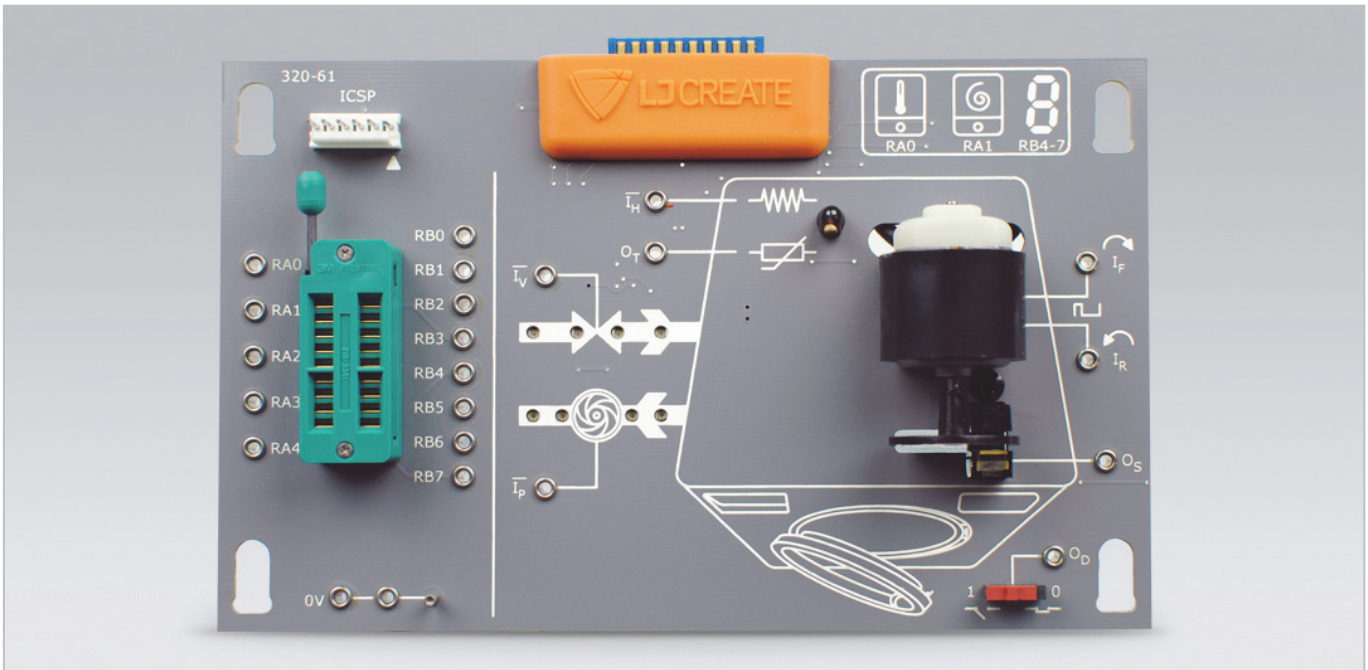


Product Information Sheet

PIC Programmer and Applications Card



This practical resource introduces students to programming microcontrollers through a range of activities based around a simulation of a washing machine.

The card is designed for use with the Electronics Study Trainer (320-00).

Practical activities based around this card are available within the digital curriculum materials provided with the Electronics Study Trainer.

The card may also be used with our optional cloud-based software. This contains theory presentations, investigations, and assessments, which link directly to the practical activities carried out using this resource.

The Card Includes the Following:

- Control outputs: drum motor, water heater, valve, pump
- Control inputs: temperature sensor, motor speed sensor, door lock sensor
- Zero insertion force socket for PIC microcontroller
- PIC programmer and development software
- Switched faults for fault-finding activities

Practical Tasks Include the Following:

- Investigating sensors and actuators
- Controlling I/O port lines
- Performing arithmetic and logical operations
- Investigating branches and jumps
- Using subroutines
- Controlling motor direction and speed
- Motor speed control with feedback
- Full washing machine sequence

Items Included:

- Circuit Card
- PIC Programmer and Software

Other Items Required:

- Electronics Study Trainer (320-00)
- 2 Digital Multimeters
- Windows PC

General Information:

Card Dimensions:
160 x 100 x 35 mm (W, H, D)

Packaging:
Orders for multiple 320-series cards are shipped in storage boxes.

Shipping Volume:
Single card: 0.001 m³
Storage box: 0.015 m³

Shipping Weight:
Single card: 0.3 kg
Storage box: 0.5 kg

Please contact LJ Create for estimated shipping volume and weight for your specific order requirements.

Order Code: 320-61

P9011-D

For more information visit www.ljcreate.com