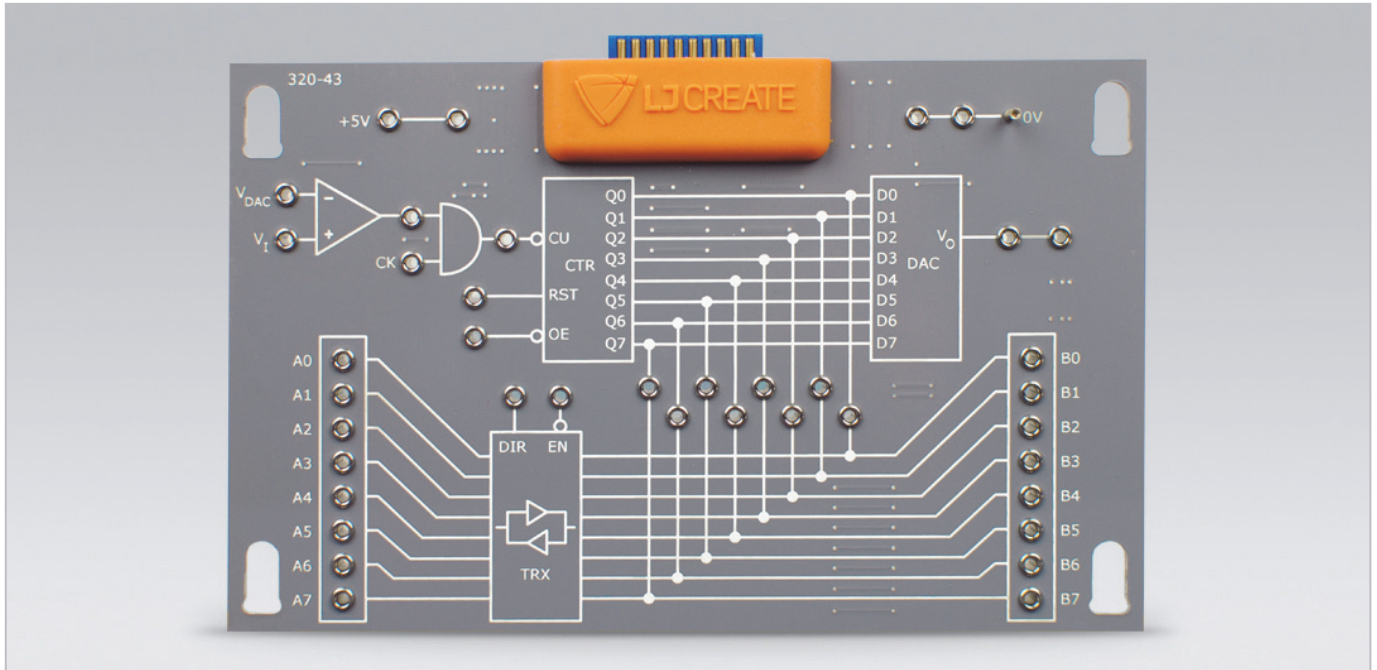


# Product Information Sheet

## A/D – D/A Digital Systems



This practical resource introduces students to digital-to-analog (D/A) conversion, analog-to-digital (A/D) conversion and bus control through a range of practical activities.

The card is designed for use with the Electronics Study Trainer (320-00).

Practical activities based around this card are available within the digital curriculum materials provided with the Electronics Study Trainer.

The card may also be used with our optional cloud-based software. This contains theory presentations, investigations, and assessments, which link directly to the practical activities carried out using this resource.

### The Card Includes the Following:

- D/A converter
- Binary counter
- AND gate
- Voltage comparator
- Bi-directional tri-state bus transceiver
- Switched faults for fault-finding activities

### Practical Tasks Include the Following:

- Investigating a D/A converter
- Building and testing an A/D converter
- Tri-state devices and data access
- Testing and fault-finding A/D and D/A systems

### Items Included:

- Circuit Card

### Other Items Required:

- Electronics Study Trainer (320-00)
- Digital Multimeter

### General Information:

Card Dimensions:  
160 x 100 x 20 mm (W, H, D)

Packaging:  
Orders for multiple 320-series cards are shipped in storage boxes.

Shipping Volume:  
Single card: 0.001 m<sup>3</sup>  
Storage box: 0.015 m<sup>3</sup>

Shipping Weight:  
Single card: 0.2 kg  
Storage box: 0.5 kg

Please contact LJ Create for estimated shipping volume and weight for your specific order requirements.

**Order Code: 320-43**

P9007-D

For more information visit [www.ljcreate.com](http://www.ljcreate.com)