

Product Information Sheet

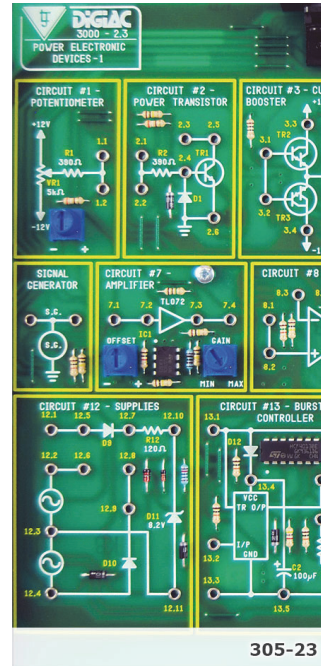
Advanced Electronics Power Electronics Pack



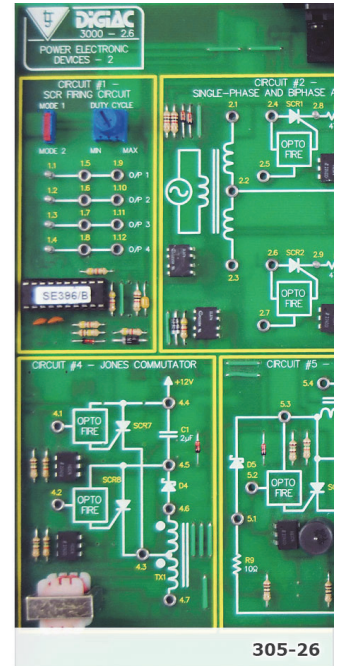
LJ CREATE™
Learning for life



305-17



305-23



305-26

This set of Advanced Electronics Study Modules provides practical learning activities aimed at the study of circuit applications.

The Power Electronics study modules are designed to connect to the Advanced Electronics Experiment Platform (300-01) as part of a modular electronics programme.

Using the Advanced Electronics Experiment Platform, a range of faults to be selected and inserted into the study module circuits to develop electronic diagnostic and faultfinding techniques.

Each study module in this pack is supplied with a PDF manual that provides theory materials, practical tasks, faultfinding activities, and technical information.

Pack Includes the Following Modules:

- AC Power (305-17)
- Power Electronics 1 (305-23)
- Power Electronics 2 (305-26)

Typical Topics Include:

- The Three-Phase Supply
- 6-Wire, 3-Wire and 4-Wire Connections
- Delta/Delta Connection
- Delta/Wye Connection
- Wye/Wye Connection
- Wye/Delta Connection
- AC Motor Principles & 3-Phase Synchronous Motor
- Single-Phase Synchronous Motor
- Power Factor Correction
- Other AC Motors
- Three-Phase Rectifiers
- Three-Phase Inverter and Over-Current Protection
- Power Transistor
- Duty Cycle Controller
- Current Booster
- Audio Power Amplifier
- MOS Power FET
- Silicon Controlled Rectifier
- Unijunction Transistor
- Trigger Isolation
- Triac
- Single and Bi-phase Control

- SCR Bridge Circuits
- The Jones Commutator
- The McMurray-Bedford Inverter
- The Auxiliary Commutated Inverter

Other Items Required:

- 300-01 Advanced Electronics Experiment Platform
- Digital Multimeter
- Dual Trace Oscilloscope
- Function Generator

General Information:

Shipping Volume: Approx 0.024 m³
Shipping Weight: Approx 8 kg

See individual module information sheets for more specific details.

Order Code: 305-00

P8605-C

For more information visit www.ljcreate.com