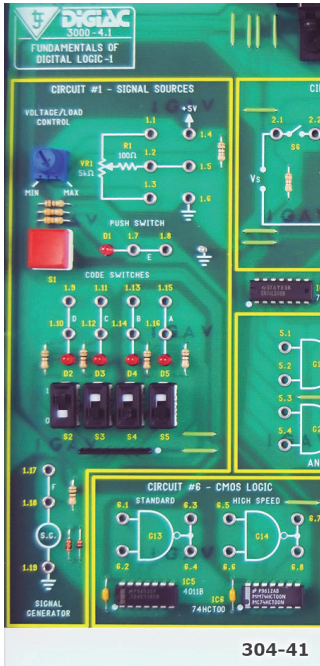


Product Information Sheet

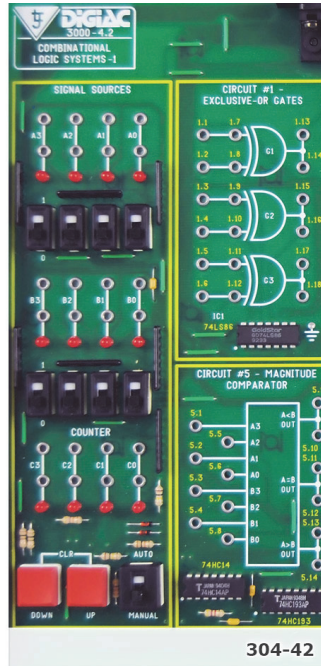
Advanced Electronics Digital Pack



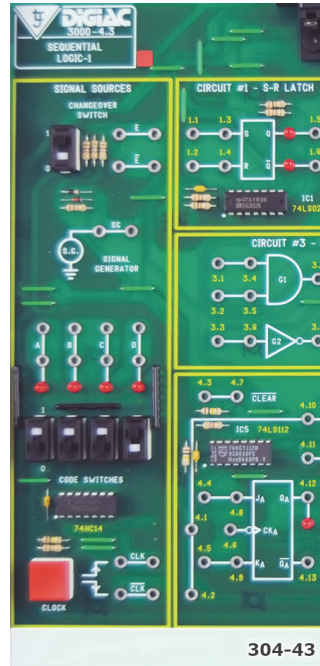
LJ CREATE™
Learning for life



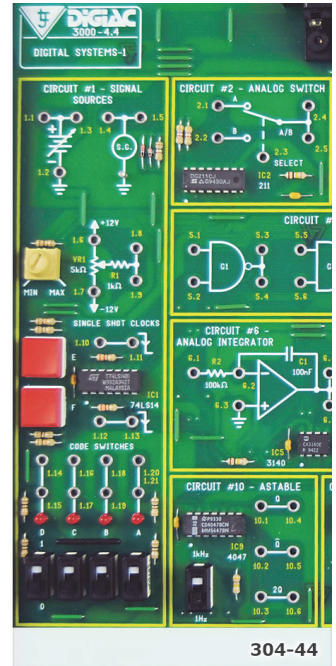
304-41



304-42



304-43



304-44

This set of Advanced Electronics Study Modules provides practical learning activities aimed at the study of circuit applications.

The Digital Electronics study modules are designed to connect to the Advanced Electronics Experiment Platform (300-01) as part of a modular electronics programme.

Using the Advanced Electronics Experiment Platform, a range of faults to be selected and inserted into the study module circuits to develop electronic diagnostic and faultfinding techniques.

Each study module in this pack is supplied with a PDF manual that provides theory materials, practical tasks, faultfinding activities, and technical information.

Pack Includes the Following Modules:

- Fundamentals of Digital Logic (304-41)
- Combinational Logic (304-42)
- Sequential Logic (304-43)
- Digital Systems (304-44)

Typical Topics Include:

- Number Systems
- Switch Logic
- Diode Logic
- Diode-Transistor logic (DTL)
- Transistor-Transistor Logic (TTL)
- Logic Expression and Simplification
- Karnaugh Maps
- CMOS Gates
- Schmitt Trigger Circuits
- Open Collector Gates
- EX-OR and EX-NOR Gates
- Encoder and Decoder Circuits
- Multiplexer and Demultiplexer Circuits
- Priority Encoder Circuits
- Magnitude Comparator Circuits
- Full Adder Circuits
- Three State Logic Circuits
- The S-R Latch
- The D-Type Flip-Flop
- The J-K Flip-Flop
- Shift Registers
- Binary Counters

- The Analog Switch and Multivibrator IC Circuits
- Binary/BCD Counters and 7-Segment Decoder/Driver/Displays
- The Analog Comparator and Analog Integrator
- D-A Converter IC and an A-D Converter Circuit
- Voltmeter, Frequency Counter/Timer, and Triangular Waveform Generator Digital Systems.

Other Items Required:

- 300-01 Advanced Electronics Experiment Platform
- Digital Multimeter
- Dual Trace Oscilloscope
- Function Generator

General Information:

Shipping Volume: Approx 0.032 m³
Shipping Weight: Approx 8 kg

See individual module information sheets for more specific details.

Order Code: 304-00

P8604-C

For more information visit www.ljcreate.com